



**ENSTA**  
Bretagne

**FRENCH STATE GRADUATE, POST-GRADUATE  
& RESEARCH INSTITUTE**



ADVANCED MASTERS  
MASTERS OF SCIENCE (MSc)  
MSc IN ENGINEERING PROGRAM

[www.ensta-bretagne.fr/en](http://www.ensta-bretagne.fr/en)



## ENSTA BRETAGNE CAMPUS

- large and well-equipped campus
- 10 min from downtown Brest and seaside
- includes student residence of 222 rooms

1 000

STUDENTS,  
MSc STUDENTS,  
PHD STUDENTS



## BREST

- port city, at the westernmost tip of France
- an excellent quality of life
- a university city with 26,000 students including 1,700 foreign students
- Brest ranks 4<sup>th</sup> worldwide in Maritime Research and Innovation



## ADVANCED MASTERS

- Expert in Marine Renewable Energies
- Marine Engineering/Naval Architecture and Offshore Engineering
- Maritime Projects Management
- Pyrotechnics and Propulsion

Length of study: 1 year

Entry requirements: MSc degree or equivalent or BSc + professional experience

## MASTERS OF SCIENCE (MSc)

- Maritime Engineering
- Hydrography
- Automotive Engineering
- Mobile Robotics
- Electronics Systems and Software Design and Security

Length of study: 2 years

Entry requirements: BSc degree or equivalent

Detailed programs and education fees are available for consultation online: [www.ensta-bretagne.fr/en](http://www.ensta-bretagne.fr/en)

Courses are provided in French and/or English

## MSc IN ENGINEERING PROGRAM *(diplôme d'ingénieur)*

A multi-disciplinary core curriculum, covering the major technological fields (Mathematics, ICT, Mechanics) and Human Sciences. 9 specialized courses.

Length of study: 3 years

Entry requirements: contact us at [relations.internationales@ensta-bretagne.fr](mailto:relations.internationales@ensta-bretagne.fr)

PYROTECHNIC  
SYSTEMS



MARITIME  
ENGINEERING

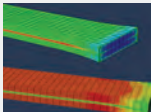
ADVANCED MODELING  
FOR MATERIALS  
& STRUCTURES



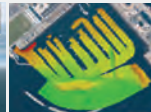
AUTOMOTIVE  
ENGINEERING



OBSERVATION SYSTEMS  
& AI,  
EMBEDDED SYSTEMS



SECURITY & DIGITAL  
SYSTEMS



OCEANOGRAPHY  
& HYDROGRAPHY

MOBILE ROBOTICS



BUSINESS &  
ENTREPRENEURSHIP  
SCIENCES

MARINE  
RENEWABLE ENERGIES



# ADMISSION

## 1<sup>st</sup> step

### ENSTA BRETAGNE ONLINE REGISTRATION

<https://formation.ensta-bretagne.fr>

FROM JANUARY  
TO APRIL

For any query about application procedure, please contact us at:  
[relations.internationales@ensta-bretagne.fr](mailto:relations.internationales@ensta-bretagne.fr)

## 2<sup>nd</sup> step

### CAMPUS FRANCE REGISTRATION

<http://www.campusfrance.org/en/page/a-country-using-cef-procedure>

To obtain a student visa, foreign nationals from countries using CEF procedure must create their personal online account on:

<https://pastel.diplomatie.gouv.fr/etudesenfrance/dyn/public/authentication/login.html?codeLangue=EN>



## REQUIRED LANGUAGE

- English: A2
- French: A2

>> French as foreign language courses offered (mandatory) during all your stay at ENSTA Bretagne.

## CONTACT

Zacharie MALICOUTIS  
Coordinator International Master Programs  
[zacharie.malicoutis@ensta-bretagne.fr](mailto:zacharie.malicoutis@ensta-bretagne.fr)  
phone: +33 298 348 974

[www.ensta-bretagne.fr/en](http://www.ensta-bretagne.fr/en)

