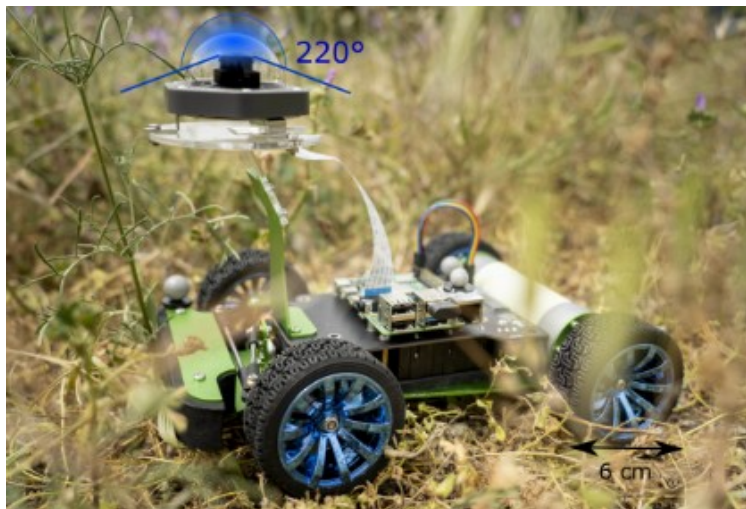


# PhD on bio-inspired route following task

Gabriel Gattaux



*Cataglyphis velox* © Michael Mangan and Hugh Pastoll



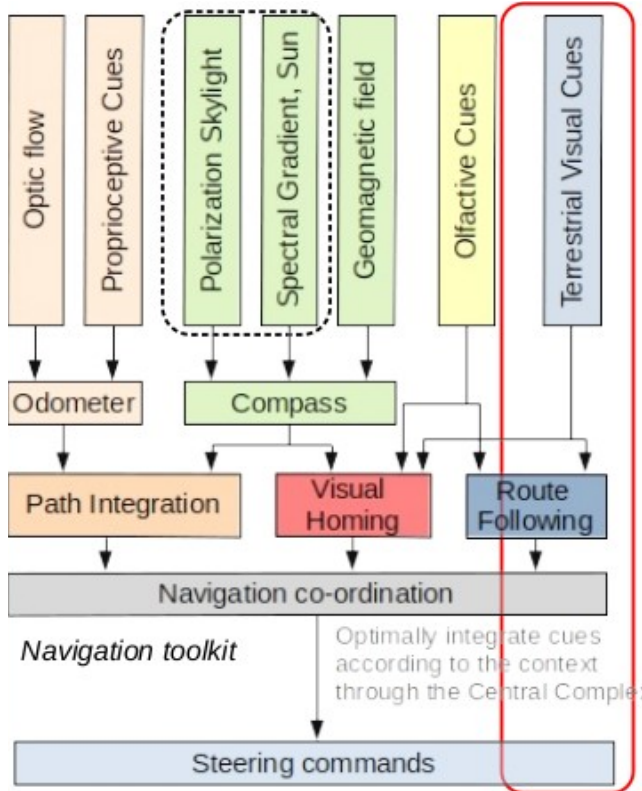
VOST Collectif / Institut Carnot STAR



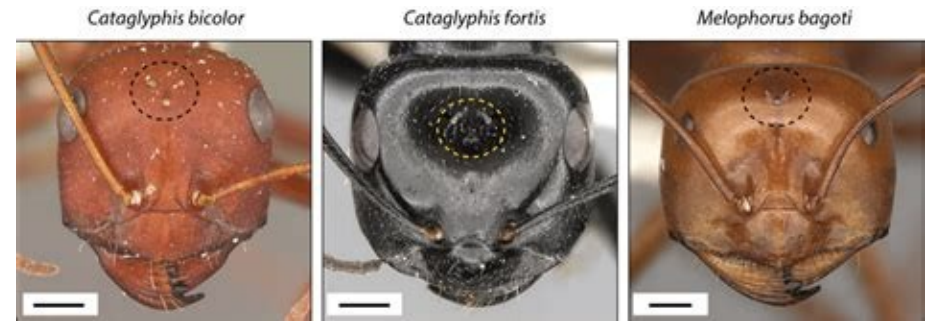
*Cataglyphis velox* ©A. Wystach/CRCA

Encadrants :  
Franck Ruffier  
Julien Serres  
Antoine Wystrach (CRCA)

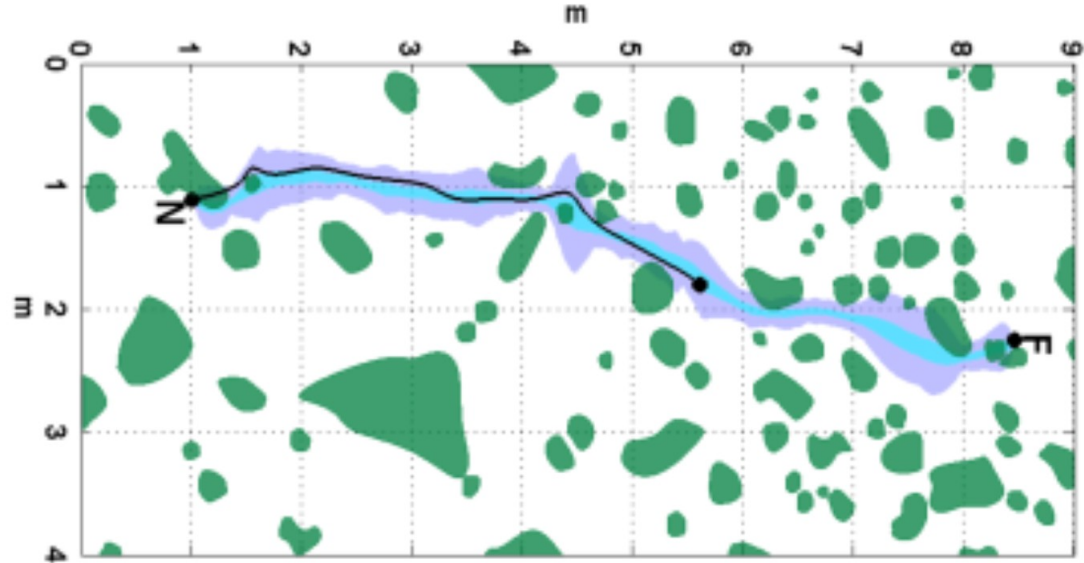
# How ants navigates ?



Sun et al, *elife*, 2020

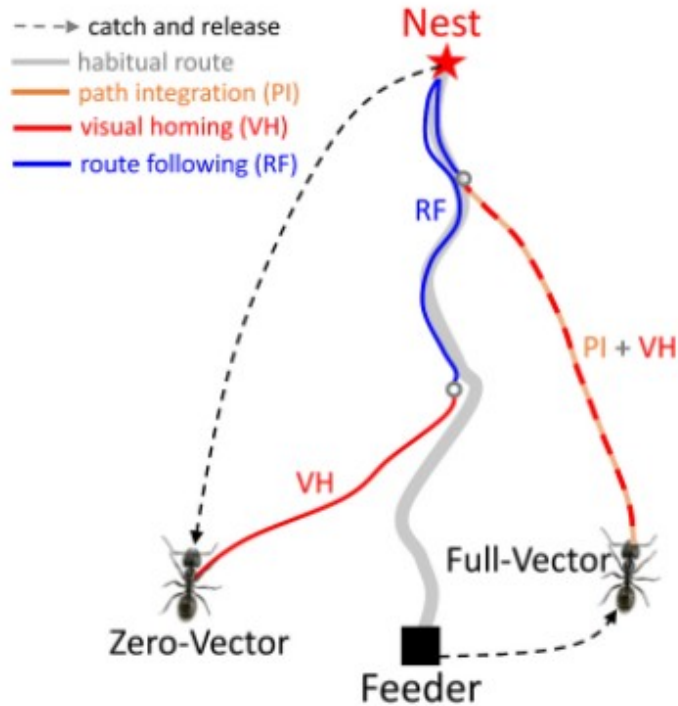


2019 - Pentchma et al, *Ocellar structure of African and Australian desert ants*

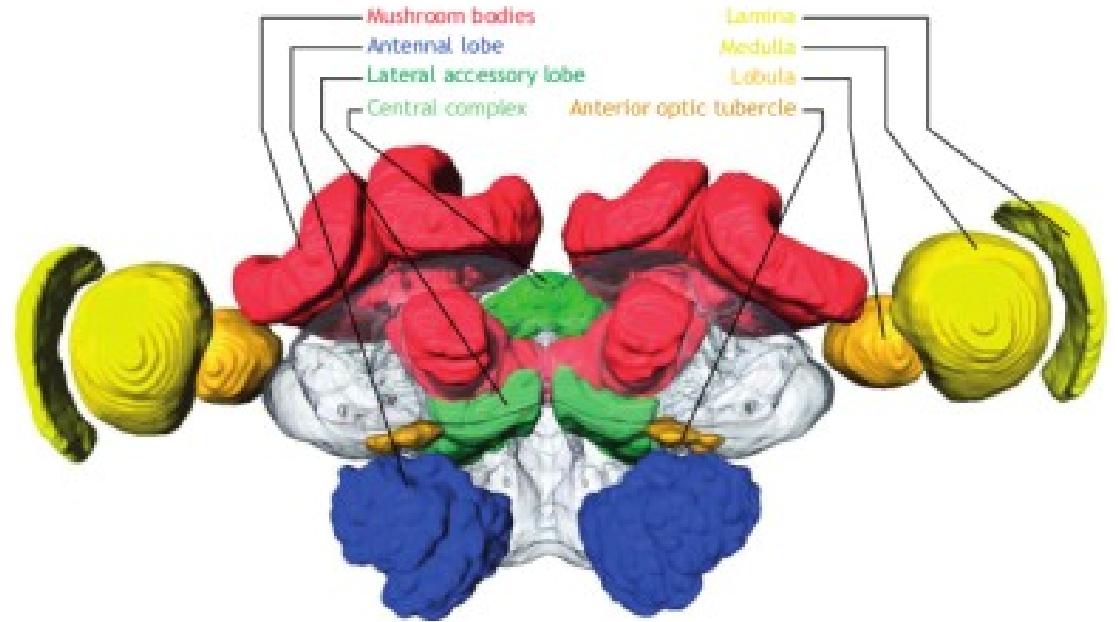


Mangan & Webb, *behavio. Eco.* 2012

# What's inside ants brain ?

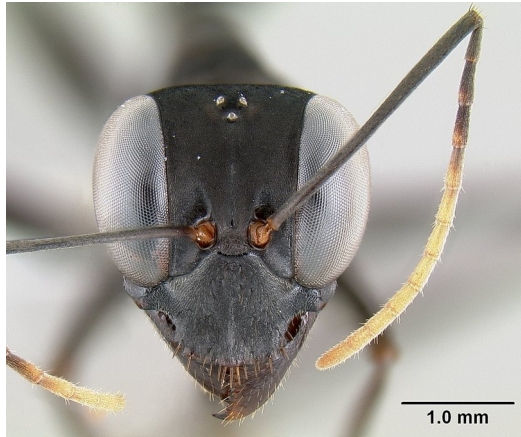


Sun et al, *elife*, 2020

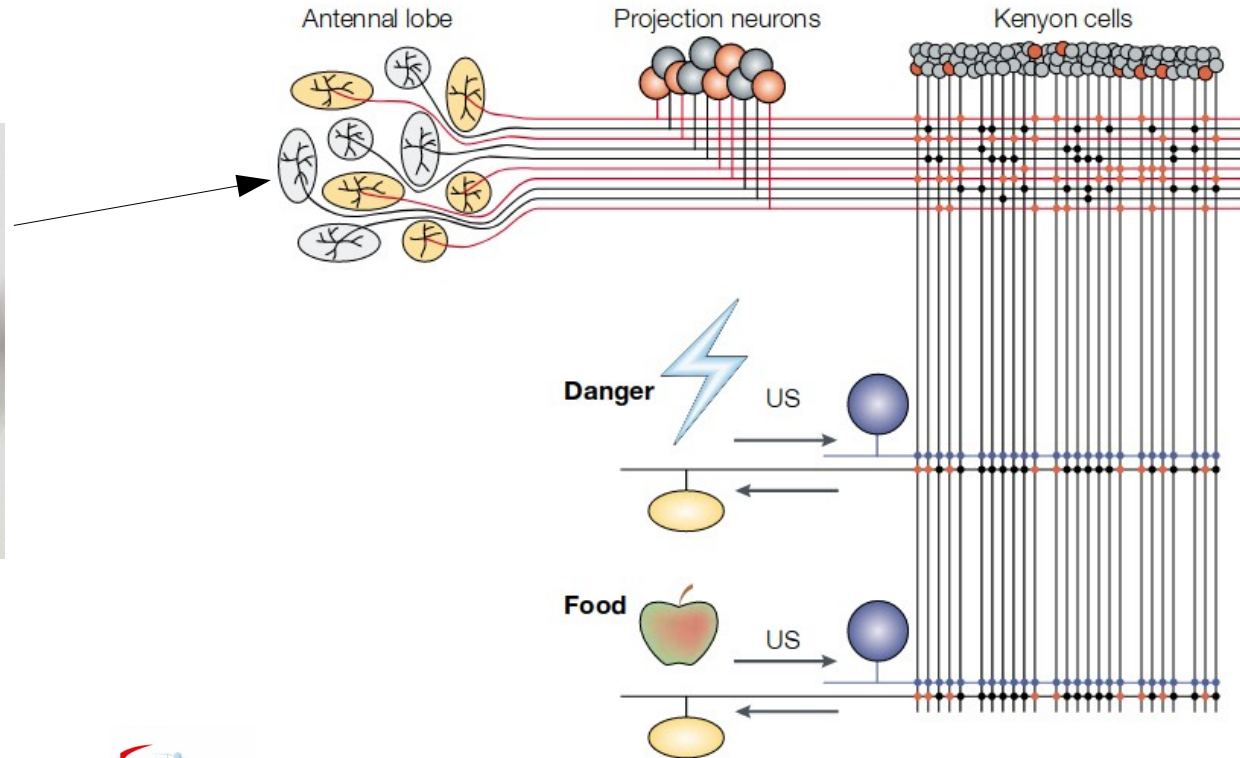


F. Steinbeck, *Journal of Experimental Biology*, 2020

# Basic Neural model w olfactory source

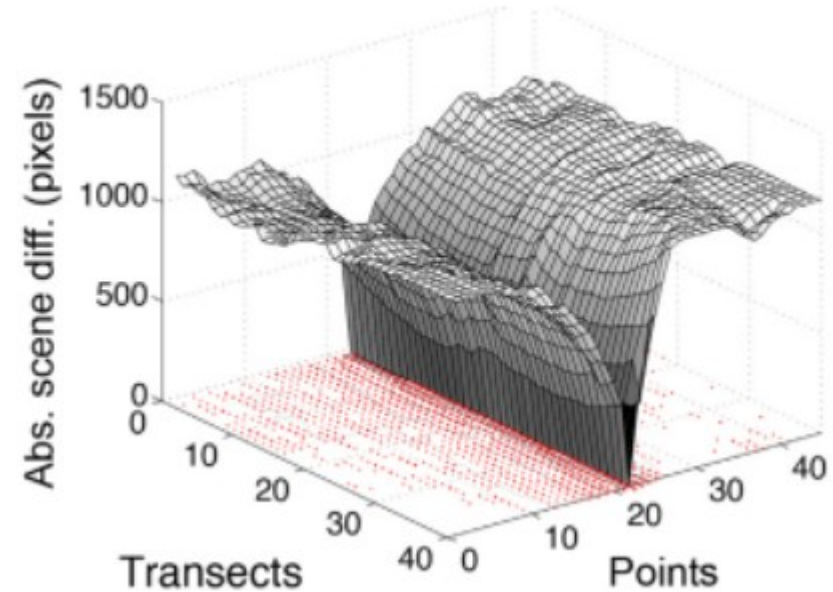
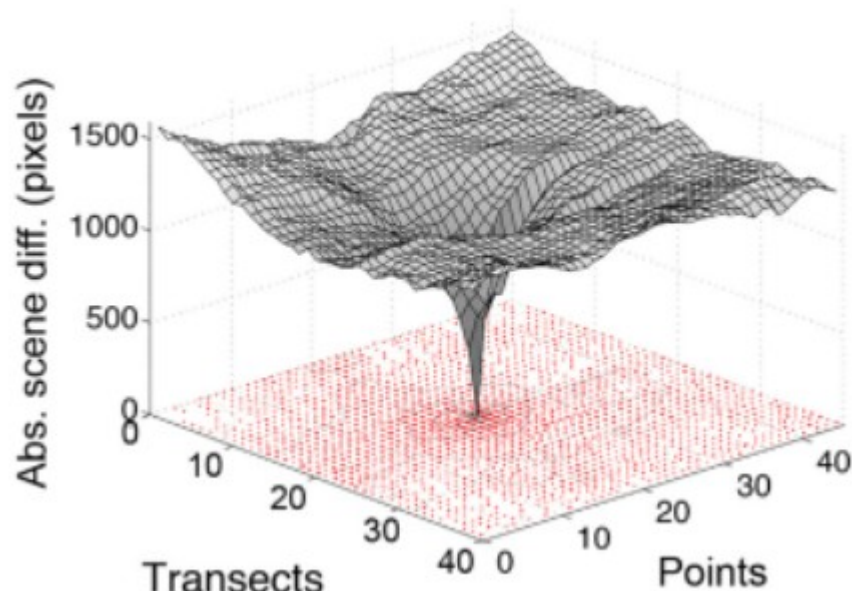


*Gigantiops destructor*, antweb



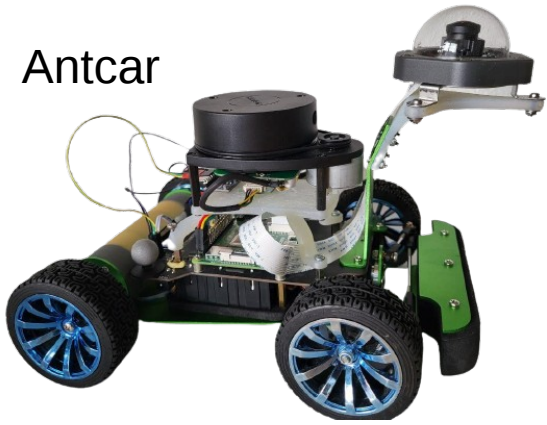
Heisenberg 2003, Nature

# Ants simulation – Familiarity over space

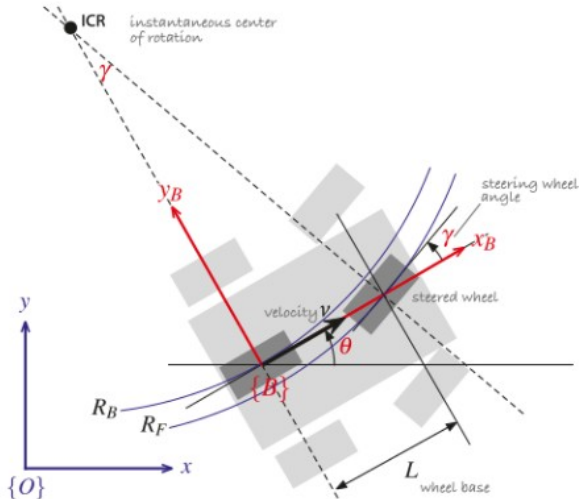


*Gaffin et al, plos one, 2016*

Antcar



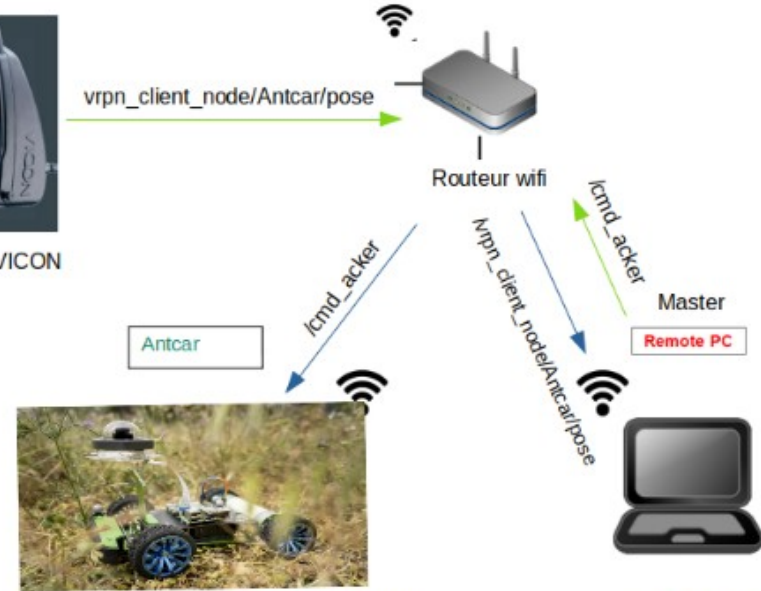
# Robotics implementation



P.corke et al, Robotics vision and control, 2011



Système de camera VICON



```
ROS_MASTER_URI = http://IP_OF_REMOTE_PC:11311
ROS_HOSTNAME = IP_OF_Antcar
```

```
ROS_MASTER_URI = http://IP_OF_REMOTE_PC:11311
ROS_HOSTNAME = IP_OF_REMOTE_PC
```

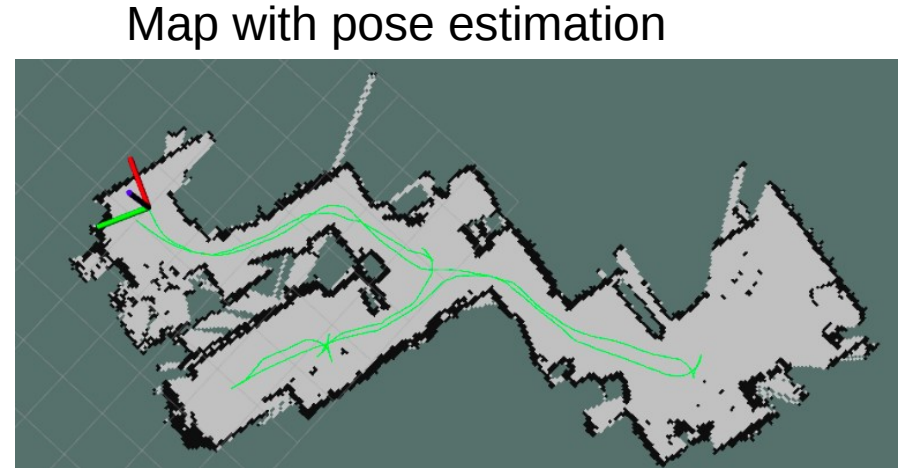
\* Example when ROS Master is running on the Remote PC

Figure 25: Communication environment

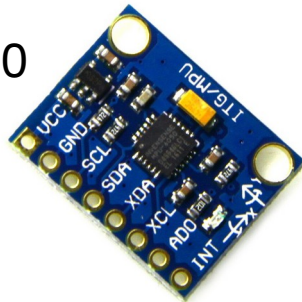
# Ground truth without VICON



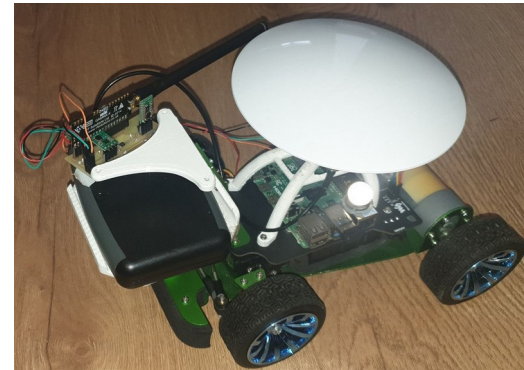
hector\_slam



MPU6050

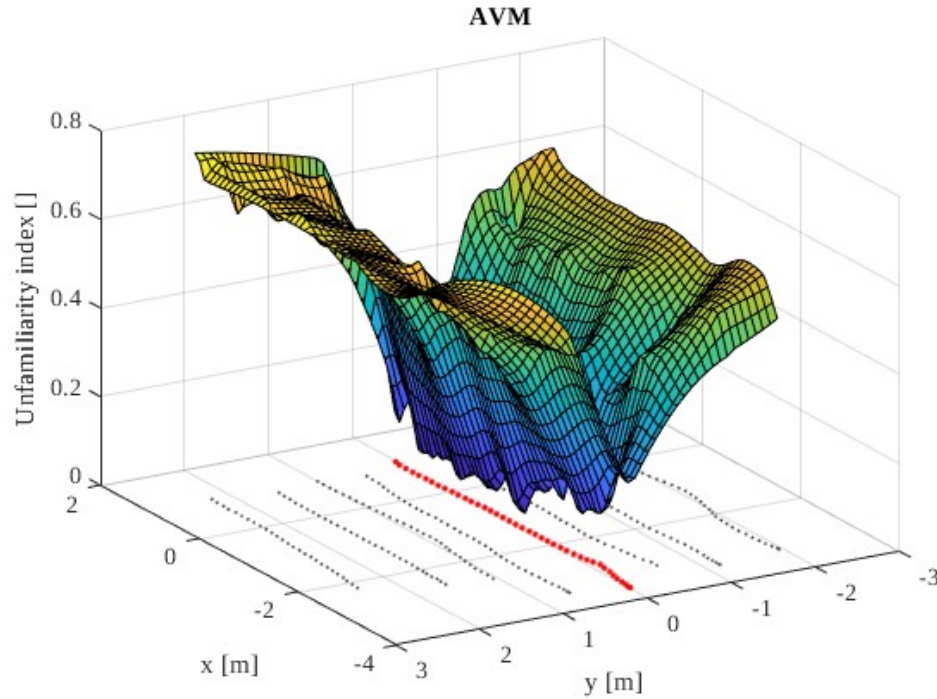


GPS + RTK

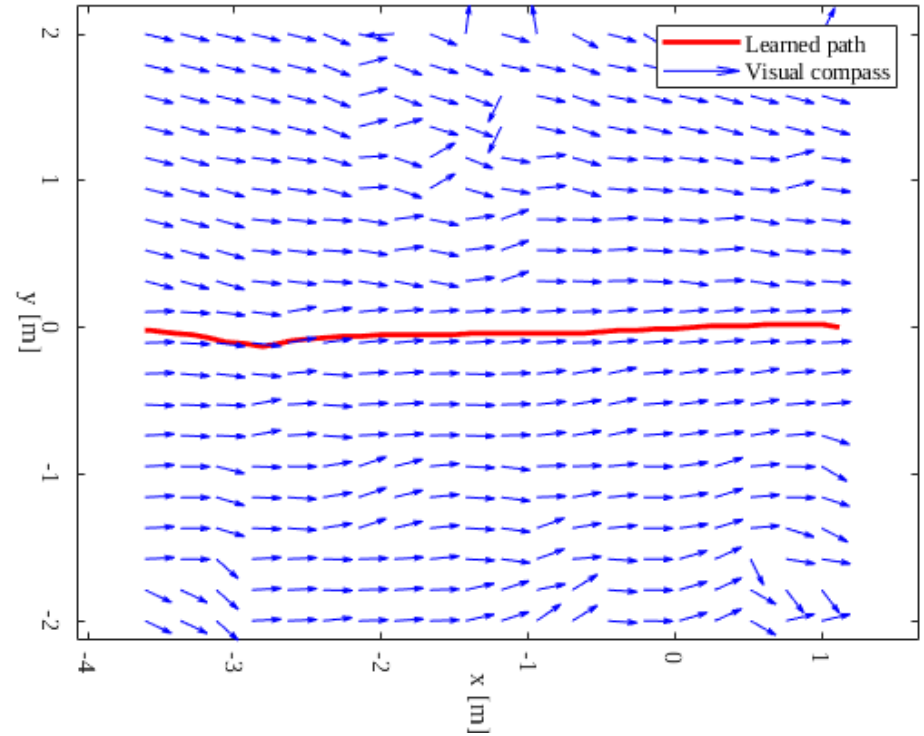


# Cross track error

In "Arene de Vol de la Méditerranée"



# Vectors fields



Finding the direction that maximize the familiarity based on vision sensor **alone** work indoor and outdoor



Thanks for watching  
*gabriel.gattaux@univ-amu.fr*