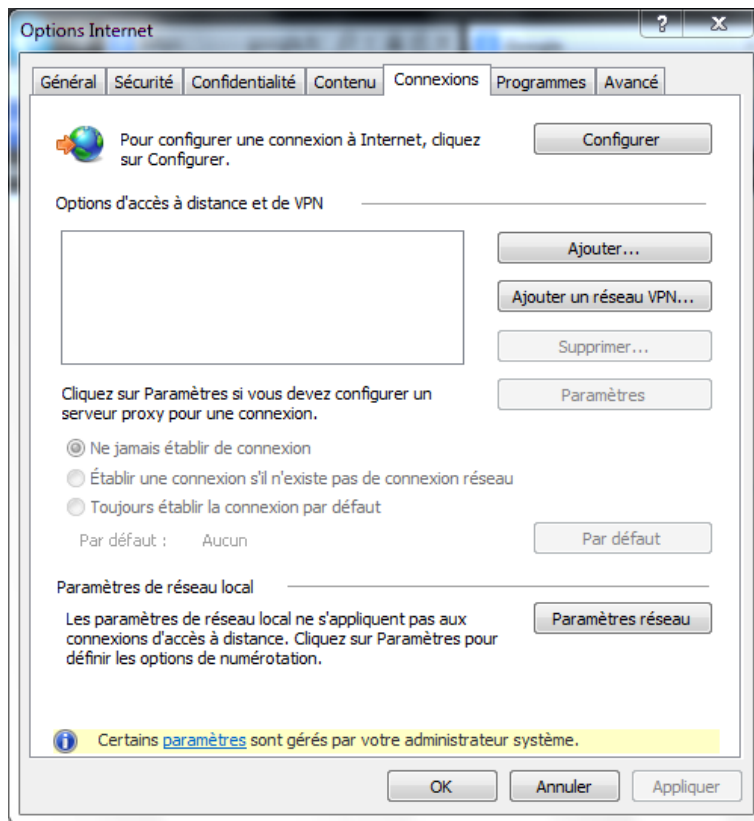


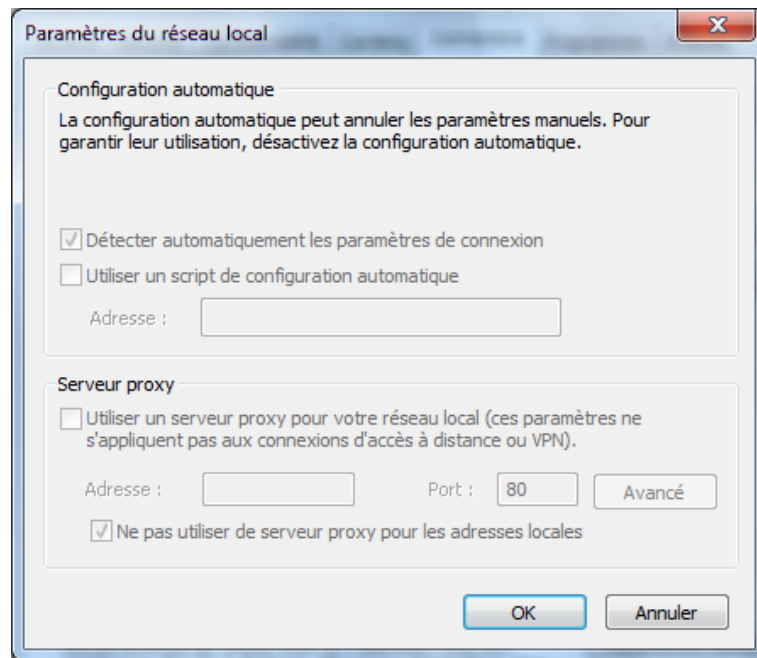
How To Connect To The Internet Through ENSTA's Proxies

June 3, 2013

1 Internet Explorer

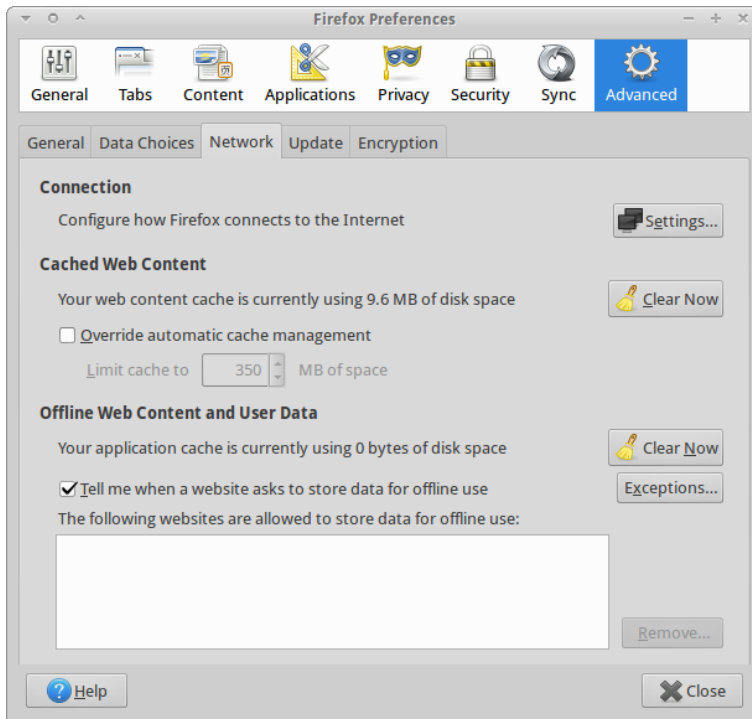
1. Click on *Tools (Alt + X)*
2. Click on *Internet Settings*
3. Go to *Connections* tab
4. Click on *Network Settings*
5. Select *Automatically Detect Proxy Settings*

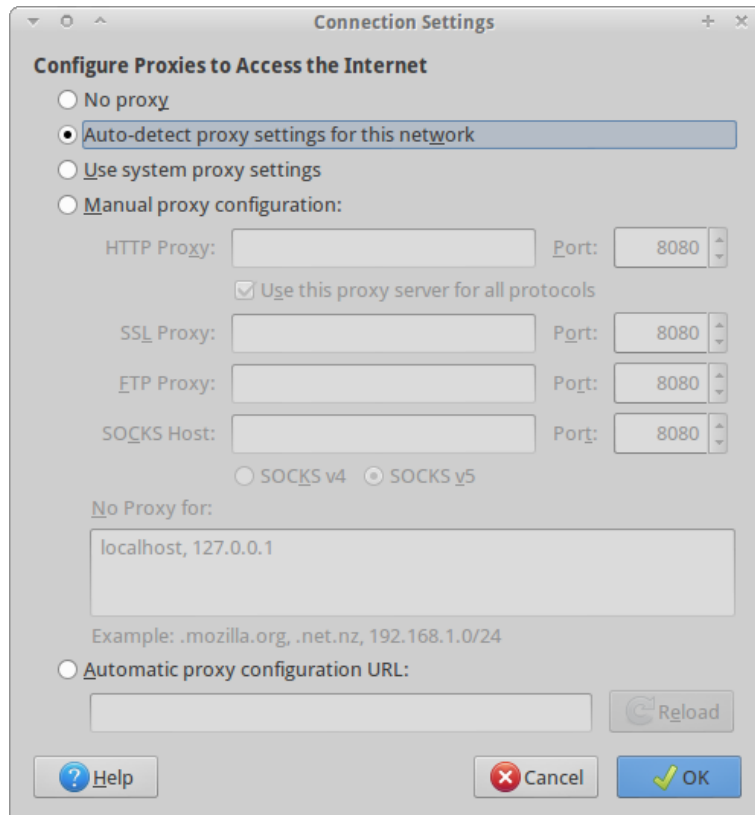




2 Firefox

1. Go to *Edit/Tools* on Linux/Windows
2. Click on *Select/Options*
3. Select *Advanced*
4. Select *Network* Tab
5. Click on *Settings...*
6. Select *Auto-detect proxy for this network*





3 Chrome/Chromium

1. Go to *Settings*
2. On the search bar on the top right type *proxy*
3. Click on *Change proxy settings...*
4. If you are using Windows refer to step 3. to 5. and skip the following
5. If you are using Linux (Ubuntu in this example), click on *Network proxy*
6. Select *Automatic*
7. Type in the following *Configuration URL*
`http://wdat.ensieta.ecole/proxy.pac`
8. Click on *Apply system wide*

